



PRELIMINARY INSTRUCTIONS FOR INDICATION A TRIP OF THE OVERVOLTAGE UNIT (SPD'S) ON THE FRONIUS TAURO

© Fronius International GmbH

Version 03 2023

Solar Energy

Fronius reserves all rights, in particular rights of reproduction, distribution and translation.

No part of this work may be reproduced in any way without the written consent of Fronius. It must not be saved, edited, reproduced or distributed using any electrical or electronic system.

You are hereby reminded that the information published in this document, despite exercising the greatest of care in its preparation, is subject to change and that neither the author nor Fronius can accept any legal liability.

Note

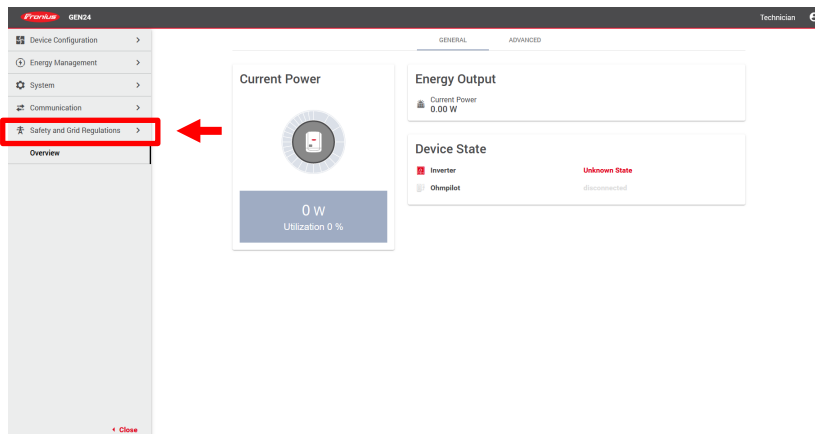
In order to currently obtain information as to whether the integrated overvoltage contactors (SPDs for short) have tripped, the display is done via a workaround. This can be done as follows.

Step 1

Connect via smartphone / tablet or laptop to the data communication board of your Fronius Tauro. You can find out how to do this in your operating instructions.

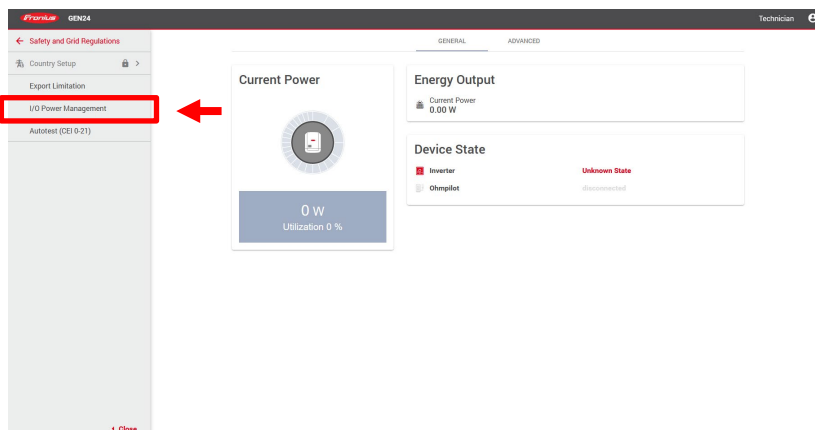
Step 2

Go to the tab „Safety and Grid Regulations“



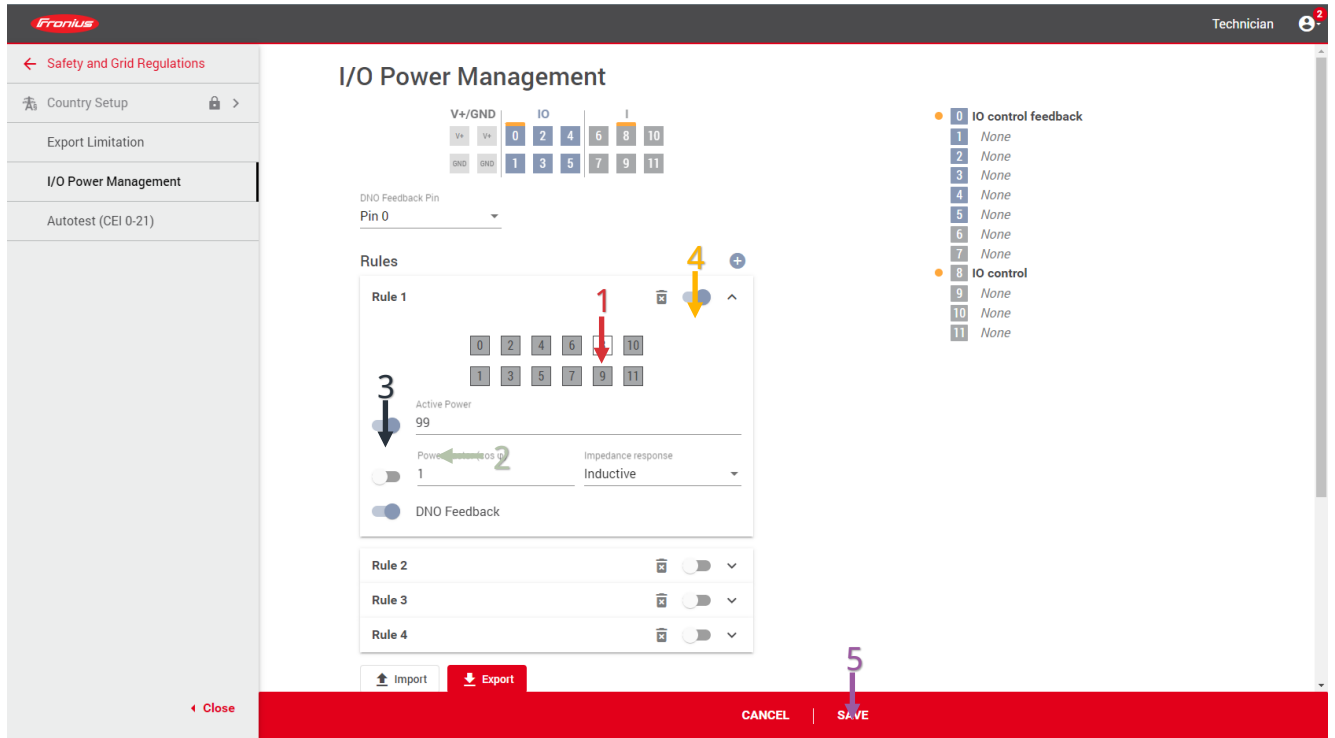
Step 3

Go to the tab „I/O Power Management“



Step 4

Activate the active power function at a free rule (in the example rule 1 - IO control position 8). Depending on the setting of the value, in this case it was set to 99% output power of the inverter, the inverter regulates its output power.

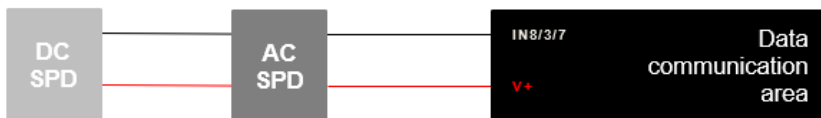


Note to step 4

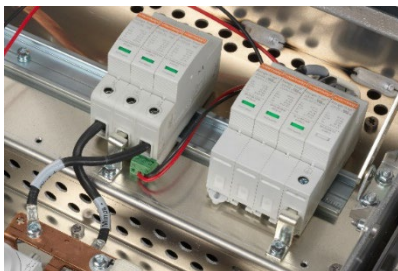
Please note that the signal line of the SPDs is connected to position 8 ex works. If you change the connection, you must take this into account here accordingly.

In the example we reduce the active power to an output power of 99%. This ensures that you also see this behavior very clearly in the Solar.web at Archive.

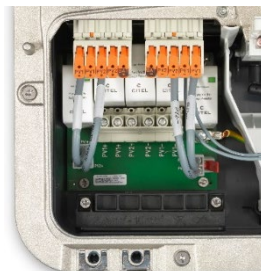
Circuit diagram:



Example pictures:



SPD's Fronius Tauro



SPD's Fronius GEN24

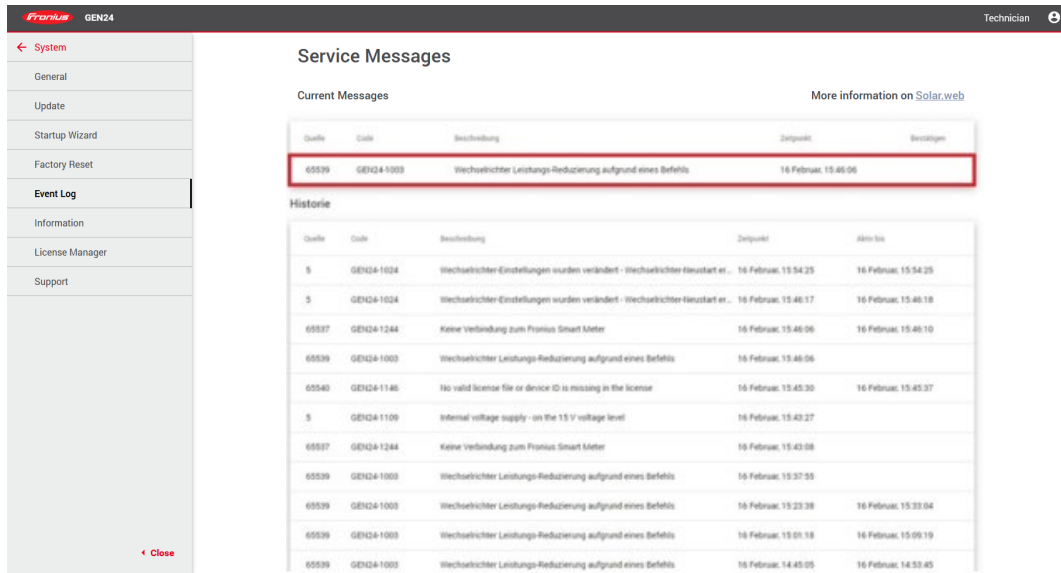


Pilot

Display State Code (1003)

If the overvoltage protection is triggered, this rule reduces the inverter to an output power of 99% and at the same time a state code 1003 is ejected. You can see this error message either in Solar.web or via the data communication interface of the inverter.

Example:



The screenshot displays the 'Service Messages' section of the Solar.web interface for a Fronius GEN24 inverter. The interface includes a sidebar menu on the left with options like System, General, Update, Startup Wizard, Factory Reset, Event Log, Information, License Manager, and Support. The main content area shows 'Current Messages' and a 'Historie' (History) table. The 'Current Messages' table has one entry with code 1003, which is highlighted with a red border. The 'Historie' table lists several previous messages with their source, code, description, and timestamps.

Quelle	Code	Beschreibung	Zeitpunkt	Beitragen
65539	GEN24-1003	Wechselrichter Leistungs-Reduzierung aufgrund eines Befehls	16 Februar, 15:46:06	

Quelle	Code	Beschreibung	Zeitpunkt	Alarm bis
5	GEN24-1024	Wechselrichter-Einstellungen wurden verändert - Wechselrichter Neustart er...	16 Februar, 15:54:25	16 Februar, 15:54:25
5	GEN24-1024	Wechselrichter-Einstellungen wurden verändert - Wechselrichter Neustart er...	16 Februar, 15:46:17	16 Februar, 15:46:18
65537	GEN24-1244	Keine Verbindung zum Fronius Smart Meter	16 Februar, 15:46:06	16 Februar, 15:46:10
65539	GEN24-1003	Wechselrichter Leistungs-Reduzierung aufgrund eines Befehls	16 Februar, 15:46:06	
65540	GEN24-1146	No valid license file or device ID is missing in the license	16 Februar, 15:45:30	16 Februar, 15:45:37
5	GEN24-1109	Internal voltage supply - on the 15 V voltage level	16 Februar, 15:43:27	
65537	GEN24-1244	Keine Verbindung zum Fronius Smart Meter	16 Februar, 15:43:08	
65539	GEN24-1003	Wechselrichter Leistungs-Reduzierung aufgrund eines Befehls	16 Februar, 15:37:35	
65539	GEN24-1003	Wechselrichter Leistungs-Reduzierung aufgrund eines Befehls	16 Februar, 15:23:38	16 Februar, 15:33:04
65539	GEN24-1003	Wechselrichter Leistungs-Reduzierung aufgrund eines Befehls	16 Februar, 15:01:18	16 Februar, 15:09:19
65539	GEN24-1003	Wechselrichter Leistungs-Reduzierung aufgrund eines Befehls	16 Februar, 14:45:05	16 Februar, 14:53:45